

VIP96 PLUS - Power and Harmonic Analyzer

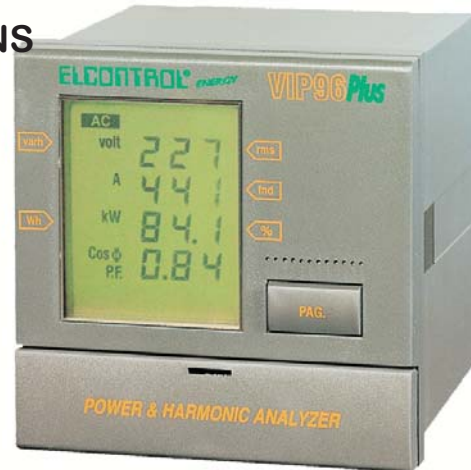
For single-phase or balanced three-phase loads
MORE THAN 100 MEASUREMENT FUNCTIONS

INSTANTANEOUS MEASUREMENTS:

- Volt (rms), Amp (rms), P.F. $\cos\phi$, kW, kvar, kVA, Hz.
- \pm kWh (imported/exported energy), \pm kvarh (inductive/capacitive energy)
- kW, kVA, kvar average and peak values

HARMONIC ANALYSIS:

- Measurement of harmonic values (from 1st to 24th order) of V and I -expressed as absolute and percentage values- including phase angles.
- Total Harmonic Distortion (THD) of V and I referred to the fundamental and total RMS value.
- Crest Factor of V and I expressed as absolute and percentage values.



Vip96 Plus/Vip96

Main Features:

- Single-phase and three-phase (balanced loads) measurements.
- Measurements as true RMS value.
- Measurements with external CT (selectable from 5/5 to 3000/5A) or directly with internal CT up to 5 A max (VIP96). Direct measurement up to 30 A (VIP96 - 30A).
- High accuracy (Class 1).
- Very user-friendly.
- Backlit LCD display.

Available Models:

- **VIP96 PLUS 485:** RS485 serial port Modbus ASCII
- **VIP96 PLUS 485:** RS485 serial port Modbus ASCII + direct current input up to 30A

- **VIP96:** basic unit
- **VIP96 - RS232C:** RS232C serial port
- **VIP96 - APQ:** with analog outputs proportional to Active (W) and Reactive (VAr) Power.
- **VIP96- RPQ:** with pulsed outputs proportional to Active (W) and Reactive (VAr) Power.
- **VIP96 - 30A APQ:** with analog outputs proportional to Active (W) and Reactive (VAr) Power.

VIP96 - Power Meter

For single-phase or balanced three-phase loads
9 MEASUREMENT FUNCTIONS IN 1

INSTANTANEOUS MEASUREMENTS:

- Volt (rms), Amp (rms), P.F. $\cos\phi$, kW, kvar, kVA, Hz
- kW, kVA, kvar average and peak values

Technical Data:

- Maximum size (mm):** instrument: 96 x 96 x 115.4
- Cut-out template:** 91 x 91
- Power supply:** 230 V ~ or 115 V \pm 10% @ 50/60 Hz (4 VA)
- Display:** Backlit LCD
- Voltmeter inputs:** VL1, N up to 600 V rms, 35 \pm 600 Hz.
- Voltage input impedance:** 4M Ω
- Voltage input overload:** max 850 V phase-neutral
- Current input:** Max 5Arms.
- Measurement range:** 0 - 120% nominal current
- Number of scales:** 3 voltage scales, 3 current scales
- Measurements:** T.R.M.S. up to 24th harmonic (50 Hz), 20th (60 Hz)
- Accuracy:** error <0.5% for V and I, <1.0% for Power (EN 62053-21)
- Suitable for connection to:** Single phase or balanced three phase
- Weight of instrument:** 1 Kg
- Protection level:** instrument IP20, front panel IP30
- Ambient temperature range:** -10°C + 50°C
- Relative humidity range (R.H.):** from 20% to 80%.
- Condensation:** not allowed

Standards and Regulations

Vip96 conforms to Directive 73/23/CEE (LVD) and 2004/108/CE (EMC). It has been designed with reference to EN 61010-1, EN 61326 including append. A1/A2/A3, EN 61000-6-2, EN 61000-6-3, EN 61000-3-2, EN 61000-3-3, EN 61000-3-3/A1, EN 61000-4-2, EN 61000-4-3, EN 61000-4-4, EN 61000-4-5, EN 61000-4-5/A1, EN 61000-4-6, EN 61000-4-6/A1, EN 61000-4-8, EN 61000-4-8/A1, EN 61000-4-11, EN 61000-4-11/A1.